

Parish Profile Inventory and Optional Data Report

- 57 total profile forms returned
 - On average we had 90% + response on each question
 - A few written comments, some regarding the survey itself but others were regarding the church or qualifying statements.
- 46 total optional forms returned



Tasks of the Church

Worship and Sacraments

We think this means

SFPC seeks **worship** that;

- Is relevant to living life and dealing with current issues
- Grows from scripture and tradition
- Has continuity with SFPC traditions in worship

And SFPC is not overly concerned that;

- Worship is expressed in contemporary language and music



Tasks of the Church

Mission and Outreach

We think this means

SFPC seeks **mission outreach** that;

- Helps those with needs
- Incorporates opportunities in members' daily lives and work
- Sees the holistic connections in life including economic, social and political
- Is more concerned about local need rather than distant need



Tasks of the Church

Spiritual Development

We think this means

SFPC seeks **spiritual development** that;

- Gives members guidance in spiritual journey
- Helps members grow in their ability and desire to connect with God
- Utilizes experiences in which we encounter God as we serve others



Tasks of the Church

Caring and Community

We think this means

SFPC seeks **a caring community** that;

- Helps members support one another in daily living
- Focuses on care for sick and shut-in persons

Tasks of the Church

Stewardship

We think this means

SFPC seeks **stewardship** that;

- Both educates and challenges members to support the work of the church
- In all areas of their life guides members to a view of stewardship as including the use of all resources – money, time and talents



Tasks of the Church Education

We think this means

SFPC seeks **Christian Education** that;

- Focuses first on the needs of children and youth
- Gives children and youth
 - A solid grounding in the Bible and Christian faith
 - Opportunities for fellowship and social interaction
 - An open search for a faith that makes sense of life
- Gives adults similar opportunities and gives all ages the opportunity to interact

Organizational Characteristics

Communication

We think this means

SFPC seeks **Communication** that;

- Internally helps members know what is going on and share their concerns and hopes
- Externally connects members to the surrounding community and the surrounding community with SFPC
- Improves communication with our surrounding community

Organizational Characteristics

Assessment and Planning

We think this means

SFPC seeks **assessment and planning** that;

- Improves listening to our members and in creating plans that are 'owned' by the congregation as well as leadership
- Conducts regular self study and review of committees and working groups in the church
- Permits feedback about the pastor
- Clearly sets forth goals and plans supported by the congregation

Organizational Characteristics

Decision Making

We think this means

SFPC seeks **decisions** that;

- Have been openly discussed and debated
- Have been thought about Biblically and theologically
- Are not made by a few



Organizational Characteristics

Resource Development

We think this means

SFPC seeks **resource development** that;

- Continues a strong tradition of generous giving of money, time and talents
- Strengthens our recruitment of new members

Organizational Characteristics

Church Identity

We think this means

SFPC seeks **a church identity** that;

- There is common agreement among members as to what our congregation stands for
- Reflects our existing affirmation that most of the church think of SFPC as “we” rather than “they”

Organizational Characteristics

Church Climate

We think this means

SFPC seeks **a church climate (or approach)** that;

- Continues in its traditional style and excellence of worship and is cautious about change in worship
- Is more open to change in programs and policies

Personal Beliefs

We think this means

SFPC have **personal beliefs** that;

- Indicate a strong belief in **God** and God's active presence and involvement in the world
- Are based on a belief that the **Bible** is inspired by God yet mediated through human voices and is trustworthy in its basic moral and religious teachings
- Accept that all people struggle with sin and that God's salvation is readily available but that there is more to faith than simply overcoming personal sin

Bible Images

We think this means

SFPC thinks about faith out of **Biblical images** that;

- Emphasis our call to love God and our experience of God's love of and care for us
- Our faith is to be lived out in compassionate action for others and a demand for justice for all
- While we are not to be materialists we are to enjoy the good things God has given us in life
- Show we do not feel disconnected from God
- Indicate we do not believe we are to live as if grace is not ours and we must fear God's punishment
- We do not feel as strongly called to evangelism



Social Attitudes

We think this means

SFPC members have **social attitudes** that;

- Support a concern for social justice on the part of corporations
- Support freedom of choice for women
- Christians should not impose their beliefs or morals values on others



Task of the Pastor

We think this means

SFPC seeks **a pastor whose priority of tasks are;**

- Planning and leading worship
- Preaching with urgency and conviction
- Attends to the spiritual development needs of the congregation
- Visits the sick and bereaved
- Brings new members into the church

Style of Ministry

We think this means

SFPC seeks **a pastor** that:

- Helps people figure things out for themselves
- Is more skilled in preaching than administration
- Is warm, outgoing and engaging
- Preaches emphasizing the Bible more than issues or ideas
- Is expert in Bible and theology
- Gets things done
- Gives comfort and assurance over being thought provoking and challenging

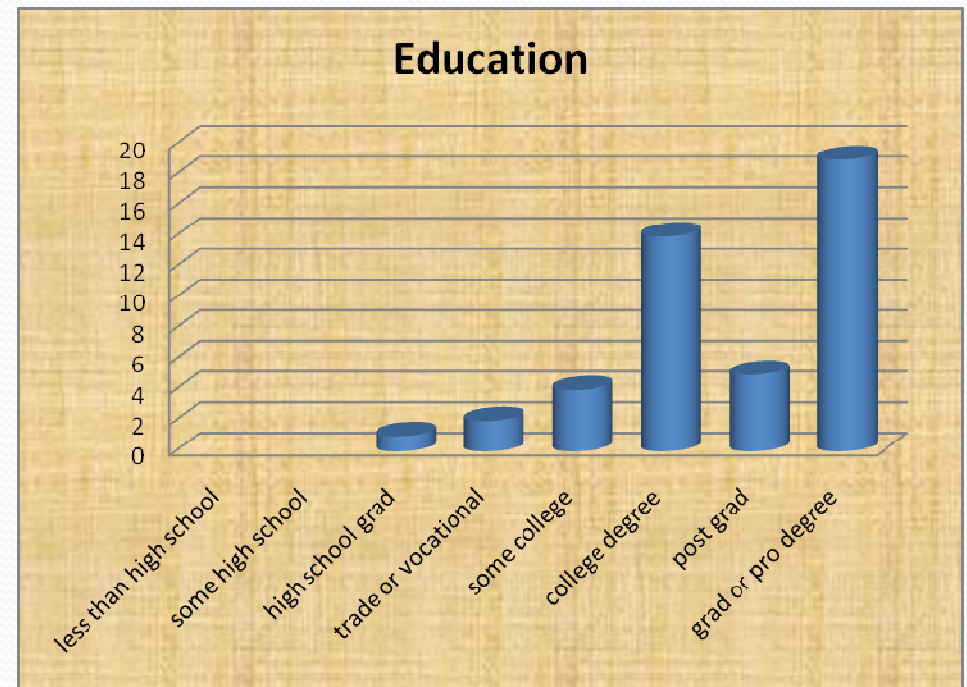
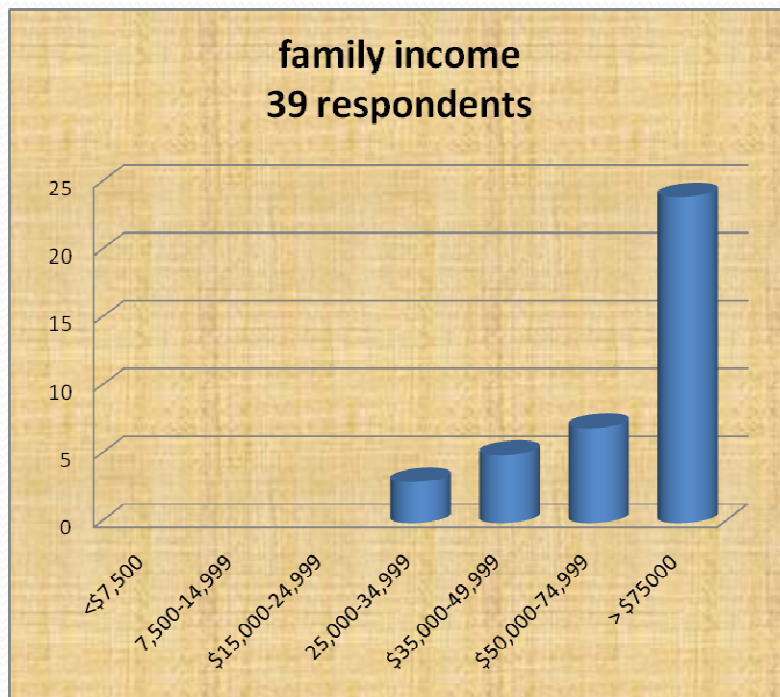
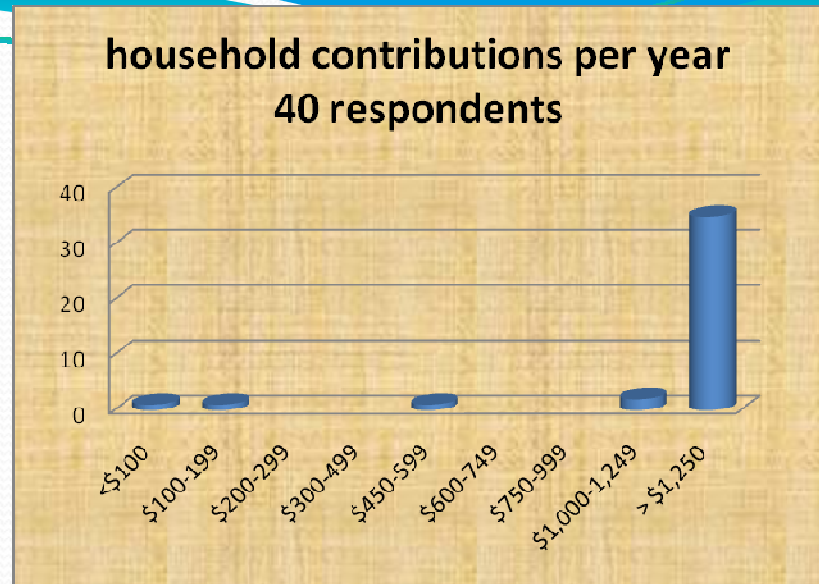
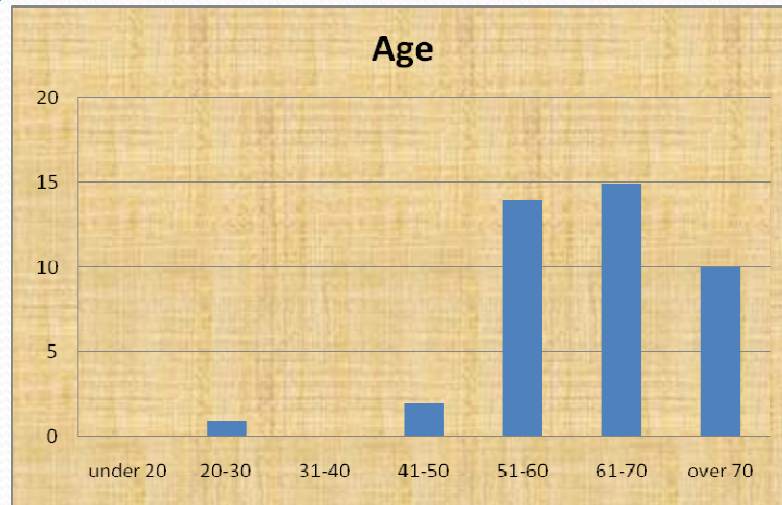
Church Participation

We think this means

SFPC is a congregation that is;

- Composed of longtime members
- Increasingly active in the life and leadership of the church as time and opportunity are presented
- Has many friendships among members
- Members are deeply attached to the church and would give more if needed to keep it open

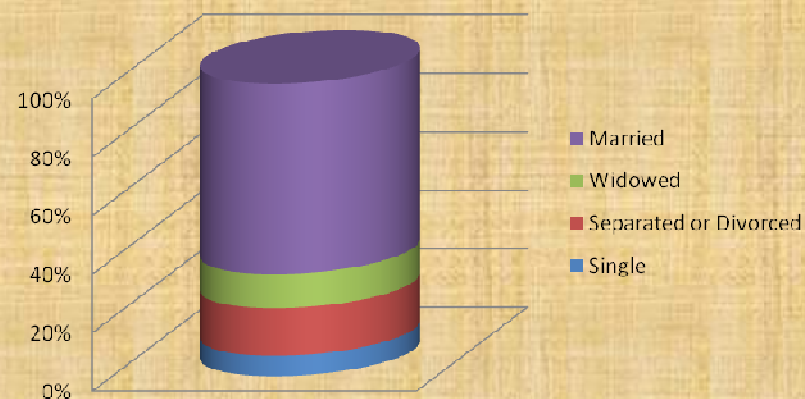
Optional Data



people or families invited to visit



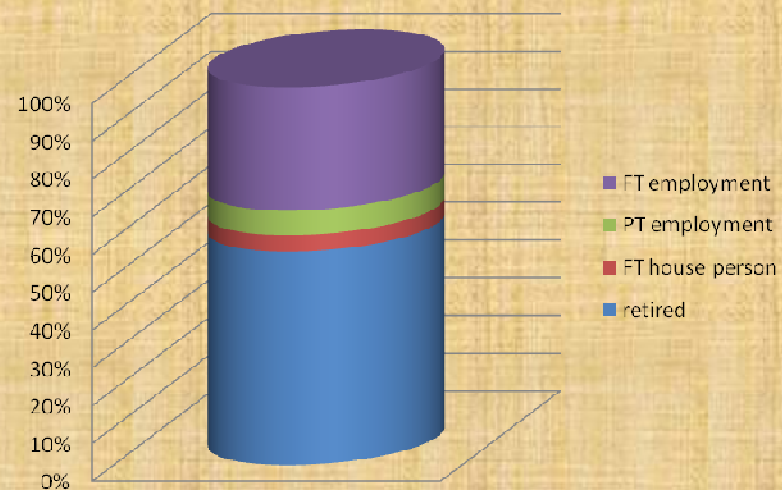
**marital status
43 respondents**



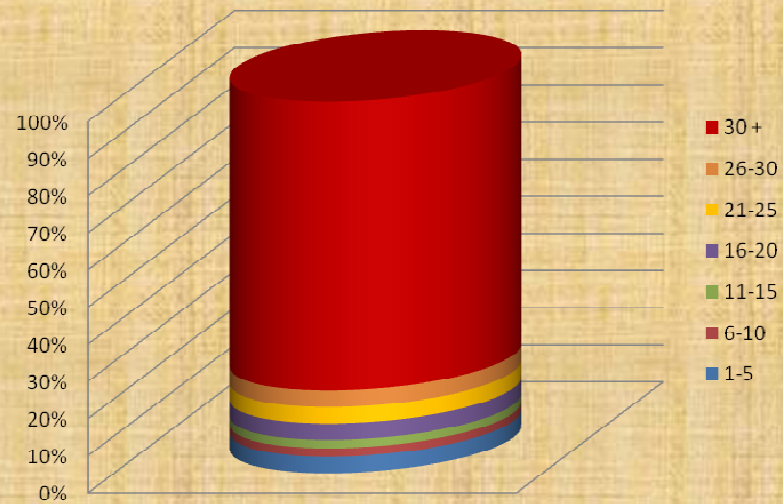
gender



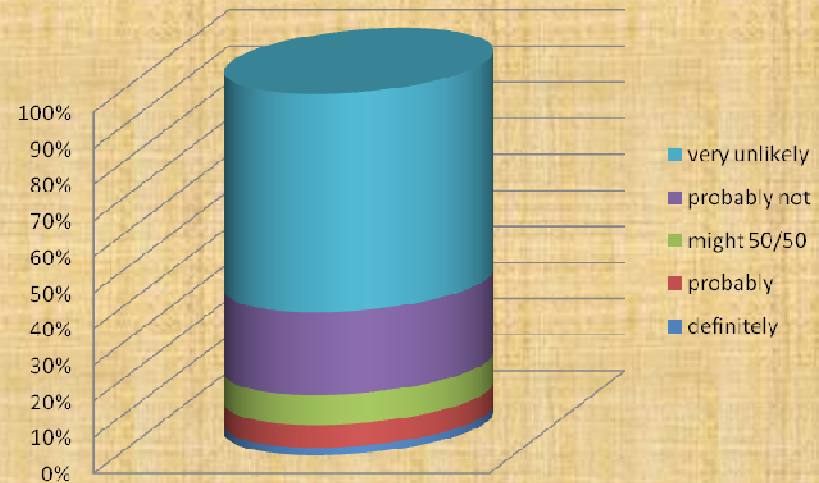
Employment



years in area



How likely to move in next 3 yrs



community clubs or organizations

